

# COMPANY PROFILE

Suite 105, Block B, De Goedehoop Close,  
Office Park 33 Sovereign Drive,  
Route 21 Corporate Park, Irene,  
Pretoria, 0181, Gauteng SA

## Expertise never equalled.

Through cooperation with other  
premiere Financial Partners, Caelum  
Financial Services provides a breadth  
of financial expertise.



Provides services in project management, consulting, training, payment systems and turnkey projects.



Has the capacity to advise clients on further investment opportunities.



Registered financial services provider through sister company Caelum Actuaries and Consultants

Caelum Financial Services has a good track record when it comes to finance origination and investments. We have various investment options that could support the Provident and Pension Funds with growth above the norm. We are involved in various large infrastructure projects that could be advantageous to your Union if we decide to partner in these types of investments.

Trust our team of Actuaries and Consultants to advise you on further investment opportunities.

# Table of Contents

- 1. OVERVIEW ..... 3
- 2. CORPORATE INFORMATION ..... 3
  - 2.1 DIRECTORS ..... 3
  - 2.2 CAELUM ECA/EXIM TRADE FINANCE MODEL ..... 6
  - 2.3 PROJECT FINANCE MODEL..... 6
  - 2.4 PARTNERS AND ASSOCIATES ..... 7
- 3. ORGANISATION ..... 7
  - 3.1 EXPERTISE, PRINCIPAL BUSINESS ACTIVITIES ..... 7
- 4. ADMINISTRATIVE INFORMATION ..... 9

## 1. OVERVIEW

Caelum Financial Services (Reg. No. 2018/092480/07) is a partner of Caelum Consulting and Actuaries which is a registered financial services provider (Reg. No: 2013/19443/06. FSP No. 45853) that has the capacity to advise clients on further investment opportunities and is a company that provides services in project management, consulting, training, payment systems and turnkey projects. We utilise the cutting edge of technology and infrastructure to provide integrated and expandable solutions for businesses of all sizes.

By working alongside the country's various parastatals, municipalities, mines and the corporate sector, Caelum Financial Services collectively provides a raft of essential services. These include asset management, data integrity, ERP financial management systems, financial statement audits, debt collection, business consulting, training, energy efficiency, renewable energy, locally manufactured public lighting, real-time measuring - managing both electricity and water, to sustainable broadband deployment.

Caelum Financial Services seeks to establish an economically viable and sustainable infrastructure solution in the New Coastal City in the OR Tambo District which can assist all Municipalities in not just South Africa but, eventually, across the continent. Our mission is to aid the whole of Africa in finding smart and progressive city solutions that will reduce energy and water wastage, creating a safe and sustainable environment to all its citizens.

The provision of technology has evolved so much since the late 1990s and Caelum business reflects this change via the creation of progressive dynamic smart city solutions, which bring together all the technological societal changes over the last three and a half decades. In order to respond appropriately to often uniquely African needs, we have created a consortium, focused and specialised best of breed companies to look at ways in which to integrate everything smarter in one place.

## 2. CORPORATE INFORMATION

### 2.1 Directors

PJ Banda; R Moss; F Mocke; L Viljoen

#### **PATRICK JOSEPH BANDA**



Patrick Joseph Banda is the Executive Chairman of the Caelum Financial Services. Patrick has extensive corporate experience in Human resource Management, Research, Project management, Government Relations, Stakeholder Management and Social Policy Research.

He is Non-Executive Chairman of Strategic Partners Group (Pty) Limited, Executive Chairman of the LTK Group of Companies. His previous work experience includes the following:

Was part of the 2006 Gauteng Provincial Government Study Tours on the Feasibility of the Speed Train in South Africa. Countries studied includes Germany, France, The United Kingdom and Canada. The Gautrain Rapid Rail Concession was initiated and implemented based on the fruitful results of this tour.

As Chairman of Powerhouse Consortium, led the implementation of the Bekkersdal Urban Renewal Project. This entailed the removal of households from dolomitic area and the resettling them in a new residential area. The project included land acquisition and the building of houses in a new township.

As Executive Chairman of Ingerop Africa (Pty) Limited, led the Johannesburg Water Management Concession Company (JOWAM), which was later transferred to the City of Johannesburg and became Johannesburg Water.

Organiser of the ABSA Bank- South African Housing Department & Treasury United States of America Low Income Housing Finance and Banking Study Tour. The Study Tour was instrumental in assisting the South African Government to devise effective funding mechanisms for low households.

Founding shareholder of Strategic Partners Group (Pty) Limited, a 38% shareholder in the Bombela concession, the operator of the Gautrain Concession.

Co-founder and past Chairman of Dijalo De Leeuw Powerhouse Valuers (Pty) Limited, a major property and asset valuation company.

Patrick holds a Master of Science in Public Policy & Management from the University of London, a Post graduate Diploma in Security & Management from University of Witwatersrand School of Governance, Professional Certificate in Public Management (Masters Level) from the University of Witwatersrand, Certificate in New Managers Programme and the Certificate in Energy Management from Wits Business School. Patrick is married, with four children and four grandchildren.

## ROWLAND MOSS



Rowland Moss is the Chief Executive Officer of Caelum Financial Services and serves as a director in various companies including Caelum Financial Services, Africa Smart City Developers, LTK Construction and Crebus Investments.

He has worked very closely with various local and international banks doing funding origination for large infrastructure projects across SADC.

He is an experienced Business Strategist for more than 20 years and is directly involved with Business Development on a senior and executive level within all sectors.

Rowland is the founding member of Applewood data tech, which was involved in the establishment of a Commercial Bank and Insurance companies in SADC. He has more than 20 years' experience in business strategy and marketing consultancy. He has assisted large companies in the financial services, High-tech, and B2B sectors to succeed in their chosen markets. Rowland was an Executive Officer and Shareholder for more than 10 years in Desto Education Training and Consulting services. Desto was one of the first companies in South Africa who presented Seta accredited learnerships and formed part of the standard generating body for SAQA. Previously the Managing Director of ALTIVEX ESDA CBP Community Based Projects: who supplied services as a Department of Labour appointed Employment and Skills Development agency. The ESDA was the operational training vehicle for DoL in service delivery concerning education and training for learners. He was a Senior Official in government services and his tasks included Drawing-up strategic plans to compile strategic short-, medium- and long-term plans related to the development objectives, structures and provisioning, planning activities, coordinating and inspection of such activities

He holds a post graduate qualification, AUD for ETD at Northwest University (Honours level) Subjects include Organizational development, HR Development, Management, Research Methodology, Training Practice, Training Environment, Instructional Design, Adult Learning, Philosophy of Education, Curriculum Design, and Communication

## FERDINAND MOCKE



Ferdie Mocke is the Director Agriculture and Environment for Caelum Financial Services. Ferdie is an experienced strategic- and business planning facilitator with exposure to different types of businesses in the energy, financial, services, manufacturing, health, environment and agricultural industries. He has extensive private enterprise managerial experience.

During his 17 years with Eskom, he was the Head of Corporate Emergency Preparedness responsible for policy and overseeing the implementation of emergency preparedness plans in all Eskom's National Key Points. He also served as District Manager as well as Electrification Manager of the Pretoria Distributor.

Since Ferdie left Eskom, he has been actively involved in Disaster Risk Management and Business Continuity Management training and consultation. Ferdie is also one of the specialists responsible for the writing of the National Disaster Management Framework published in 2005. He consulted and acted as programme manager for DME, ESKOM, DBSA, NER on the development of an integrated GIS bases planning model.

He is currently Director of several companies, inter alia:

VIRTUAL INTEGRATED ACADEMY – enabling partner, enhancing business and government performance ensuring a prosperous Southern Africa. VIA strives to develop personal competencies to ensure sustainable & successful businesses enabling economic growth and stability. CREBUS – providing creative business solutions in the agricultural, food security and energy sector; including investment, financial, integrated banking and insurance solutions. Pambili Wildlife Group – A world class wildlife and conservation-focused conglomerate that recapitalizes the industry and creates a commercially sustainable model that protects wildlife and promotes viable eco-systems.

## LEON VILJOEN

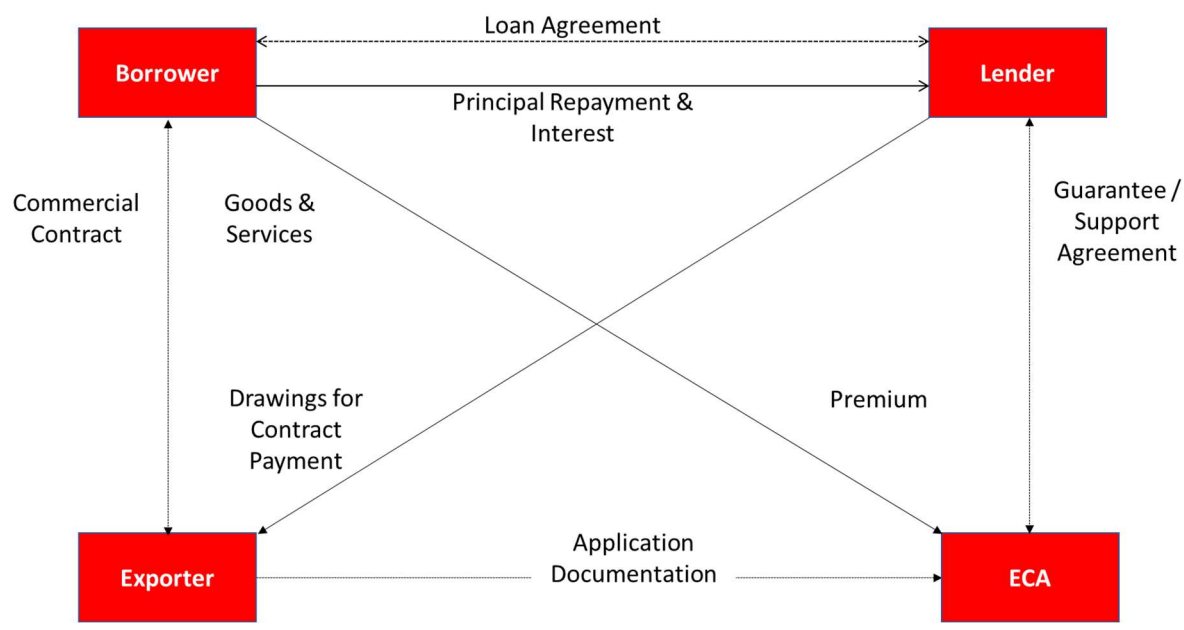


Leon Viljoen is the Director Technical and Commercial for Caelum Financial Services. Leon has a B.Eng. (Electrical & Electronic) from RAU and an MBA from Henley Management College in the UK.

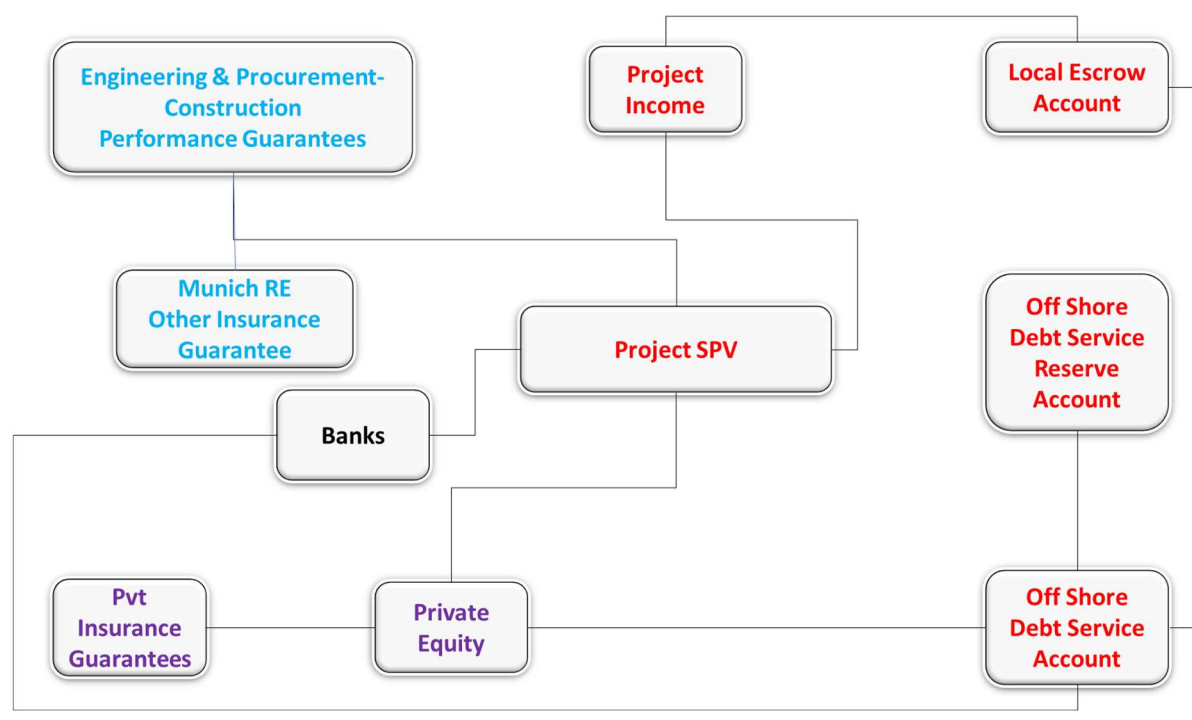
Leon has been in the power and energy market in Southern Africa for 34 years, with almost 21 years in senior management positions. He started his career in 1986 at Brown Boveri Technologies as a Project Manager. He worked his way up fast through the ranks, moving over to sales and marketing before becoming a General Manager within the Powertech group in 2000. In 2002 he became the Managing Director of Desta Power Matla and then became the Chief Executive of Powertech Transformers and Director of Powertech in 2006. He became the Chief Operating Officer of Powertech in 2012. In 2013 he became the Chief Executive Officer of ABB Southern Africa.

Leon brings in-depth knowledge of the power and energy sectors of Southern Africa, with strong experience in managing a large group of people and complex operations.

2.2 Caelum ECA/EXIM Trade Finance Model



2.3 Project Finance Model



## 2.4 Partners and Associates

- International companies that form part of the partnership are SG H2 Energy, Grupo Cobra, and Bigen Africa.
- Local companies that form part of the partnership are Reunert, CoCre8, Sun International, NHC, Njilo Capital, Crebus, Down Touch Investments, Tsela Tsweu, and DMB Holdings.
- Funding can be arranged through several local first tier banks leading pension funds in South Africa as well as equity partners such as SG H2 Energy, Grupo Cobra, Nehawu Investments Holdings and Reunert.
- Above equity Members have a combined asset value in excess of R20 Billion rand with the financial support from various Financial Institutions.
- Equity partners: Mega farmers and large Agricultural Institutions

## 3. ORGANISATION

Caelum Financial Services has a good track record when it comes to finance origination and investments. We have various investment options that could support the Provident and Pension Funds with growth above the norm. We are involved in various large infrastructure projects that could be advantageous to your Union if we decide to partner in these types of investments.

### 3.1 Expertise, Principal Business Activities

Caelum Financial Services provides the following:

#### Advisory Solutions

Insurance companies, pension funds, corporates, investment platforms, and other financial intermediaries look to Caelum's Advisory Solutions for an independent and tailored approach in creating value.

#### Asset Consulting

Our Asset Consulting team includes seasoned professionals that have occupied senior positions in the financial services industry.

#### Alternative Investments

Unique strategies provide a fertile hunting ground for investors seeking diversification from traditional investments.

#### Financial Solutions

Through or extensive network of highly qualified and capable advisers, we are able to provide an affordable and customized service that meet your needs.

#### Risk Management Solutions

Risk management is the process of identifying, assessing and controlling risks to an organization's capital and earnings.

#### SMART City Development

A smart city uses a framework of information and communication technologies to create, deploy and promote development practices to address urban challenges and create a joined-up technologically enabled and sustainable infrastructure.

### Green Hydrogen

To develop and build sustainable distributed Bio-Energy plants that convert Municipal and Agriculture waste into a bio syngas which is used to produce green hydrogen.

### SMART Agriculture

The use of suitable land will be identified and developed as an “Anchor Farm”, which will be the catalyst for development of a number of commercially viable “feeder farms” and agri-businesses and beneficiation plants in the surrounding community's communal land.

Following this integrated development approach, the development of the Anchor Farm will initiate community development and the enhancement of the livelihoods of all the community members to whom the land in the end belongs.

This will surpass the original agricultural focus of a single farm to create an international, national and regional acclaimed development hub.

### Eco-Tourism Solution

Tourism has the potential to stimulate economic prosperity in rural communities, creating jobs and small business opportunities and increasing the flow of money into an economy. And, where it is viable, tourism can incentivise and provide revenue for infrastructure investment and rural development programs, while also supporting economic activity in other sectors. The goal is to develop sustainable, community-based tourism capable of driving economic growth in strategic communities.

### Integrated human settlements as part of the smart city design

**The development of integrated human settlements** is aimed at transforming spatial housing patterns in South Africa by creating more inclusive, denser, mixed-use urban areas while striving for a more functional housing market that adequately responds to both supply and demand for all levels of affordability and need.

Integrated housing developments are funded mainly through the urban settlement's development grant and the human settlements development grant, both in the Integrated Human Settlements Planning and Development programme.

### Skills Development

The success of the rural economy depends largely on the capacity of small enterprises to seize local opportunities, build sustainable businesses, and create jobs. To build this capacity, training and mentorship are made available for rural entrepreneurs. While some of these services will be delivered through private universities and local FET colleges, most will be delivered centrally by service providers within the Virtual Platform. This includes an intensive short course and backup coaching designed to capacitate rural entrepreneurs.



## 4. ADMINISTRATIVE INFORMATION

**Company Registration No:** 2018/092480/07

**Directors:** PJ Banda; R Moss; F Mocke; L Viljoen

**Registered Company Physical and Postal Address**

Suite 105, Block B, De Goedehoop Close, Office Park 121 Sovereign Drive, Route 21 Corporate Park, Irene, Pretoria, 0181, GAUTENG, SA

**Telephone Number:** +27 (082) 759 9237 / +27 (082) 490 3700 / +27 (082) 569 4073 / +27 (082) 854 6873

**E-Mail:** [patrickjbanda@caelumfinancialservices.com](mailto:patrickjbanda@caelumfinancialservices.com) / [rowland@caelumfinancialservices.com](mailto:rowland@caelumfinancialservices.com) / [ferdie@caelumfinancialservices.com](mailto:ferdie@caelumfinancialservices.com) / [leon@caelumfinancialservices.com](mailto:leon@caelumfinancialservices.com)

**Website:** [www.caelumfinancialservices.com](http://www.caelumfinancialservices.com)

**BBBEE** – Caelum Financial Services is a Level 2 Contributor to Broad Based Black Economic Empowerment